

Lightscape 2021

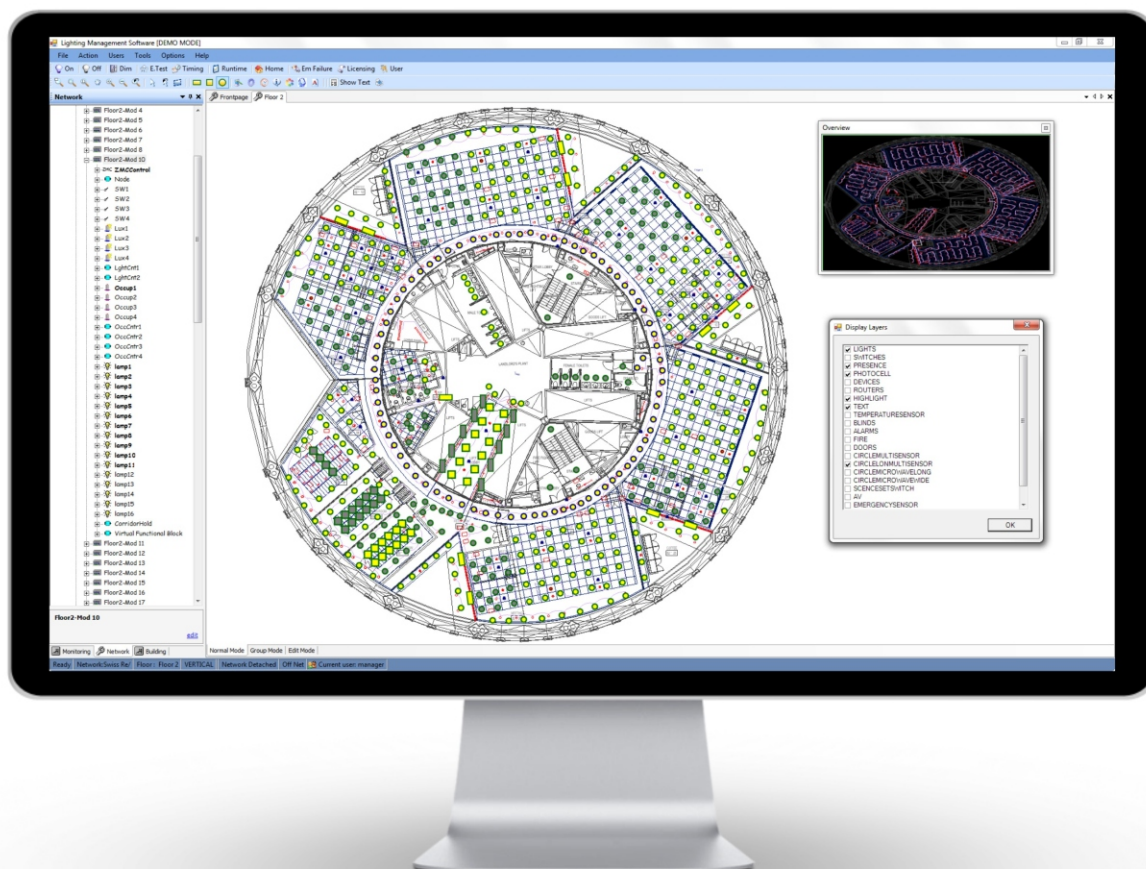
sheet 1/2

Delmatic Lightscape software is the client's window into the lighting installation, displaying real-time information on system and lighting operation while providing building supervisors with powerful tools for managing and monitoring lighting across one or multiple sites.

The software comprises a full graphical interface which identifies each luminaire against background AutoCAD building and lighting layouts, and incorporates a hierarchy of access levels to prevent unauthorised access or modifications to the system configuration.

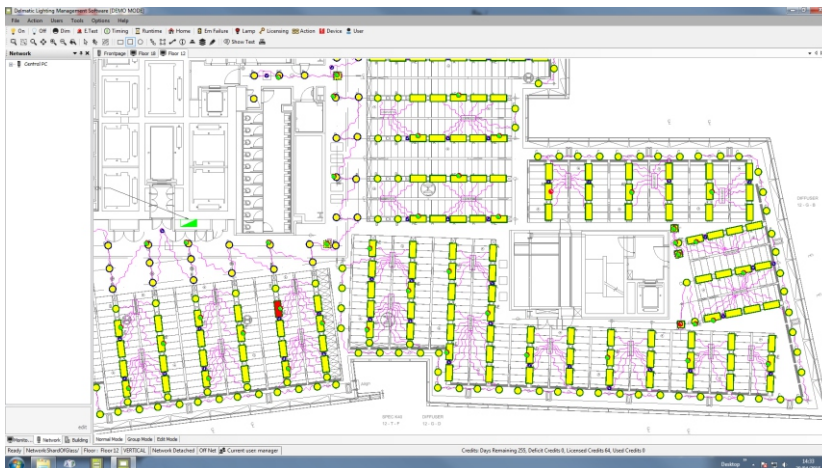


typical heatmap

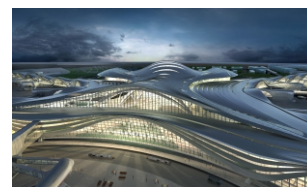
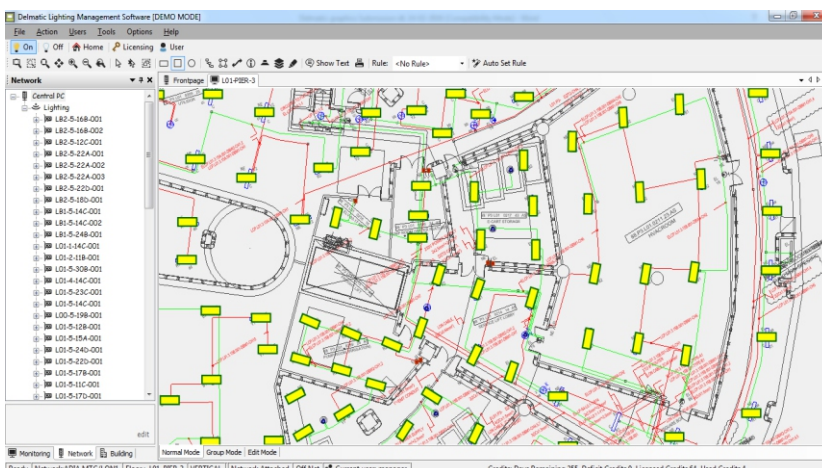


Lightscape features include:

- active status of each luminaire
- dynamic feedback from system hardware
- real-time DALI and DALI-2 lamp and ballast failure
- virtual wiring for software grouping of lighting
- drag-and-drop auto-binding configuration
- multi-level password protection and access rights
- emergency light testing and monitoring
- lamp hours-run logging
- generation of optimised luminaire relamping schedules
- configurable presence/absence detection
- adjustment of presence detector time-out period
- adjustment of photocell sensitivity thresholds
- comprehensive calendar time scheduler
- multiple time regimes for tenanted areas
- special timing patterns for holiday periods
- biodynamic tuneable white scenarios
- astronomical solar clock functions
- loadshedding routines and scenes
- hardware monitoring and self-healing diagnostics
- integration with BMS and other head-end systems
- display and control of other services eg. blinds & HVAC
- ability to export data for further analysis
- multi-client access via building IT network
- context-sensitive alerts with email and PDA options
- internet access for remote monitoring and control
- network tree (architecture and hardware inventory)
- automatic remote backup and data storage
- heatmapping and motion tracking
- compatible with Windows 10 and Windows Server 2016



Typical floor graphic from The Shard showing active LED lamp status, presence detectors status and failed lamp monitoring.



Typical zone graphic from Abu Dhabi International Airport terminal project - the largest DALI lighting control system in the world with control and monitoring of 180,000 DALI lights.