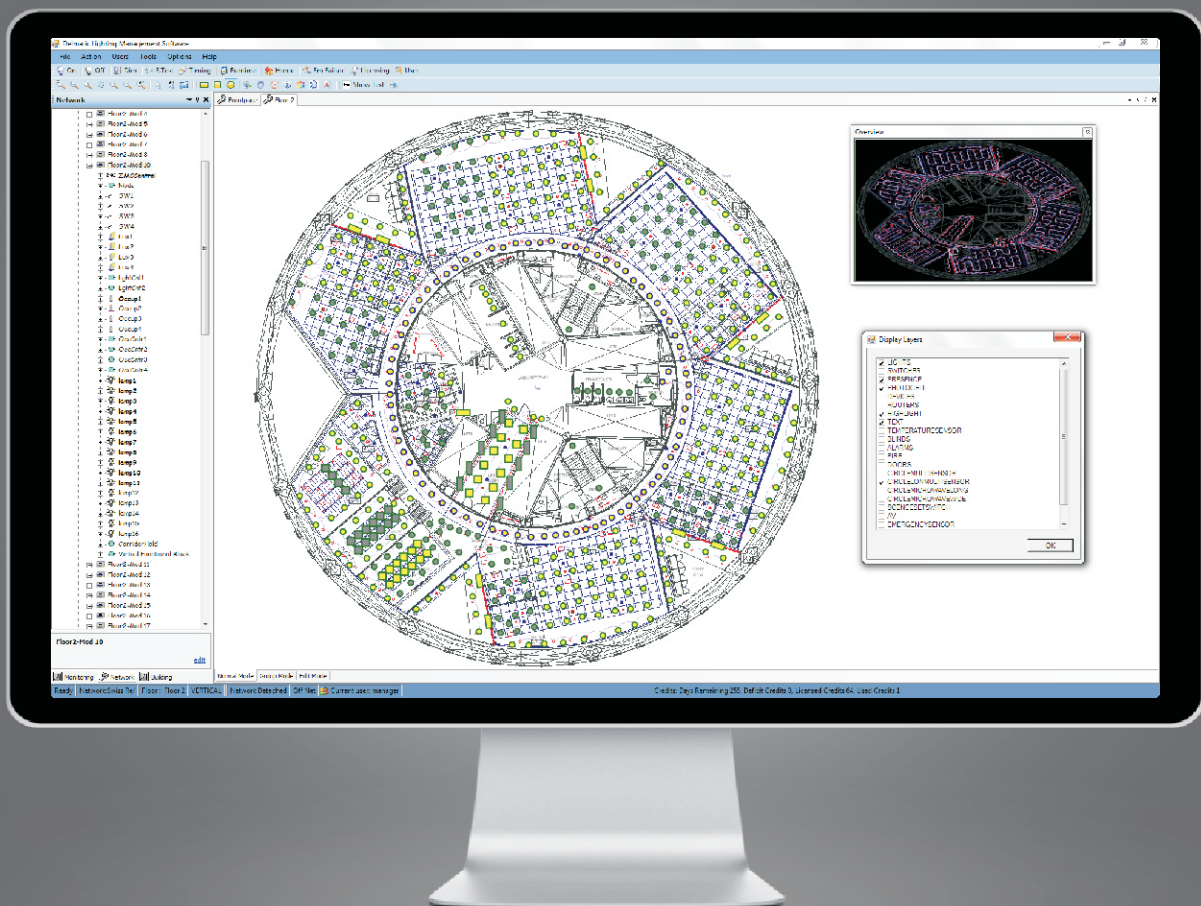


Delmatic Lightscape[®] software is the client's window into the lighting installation, displaying real-time information on system and lighting operation while providing building supervisors with powerful tools for managing and monitoring lighting across one or multiple sites.

The software comprises a full graphical interface which identifies each luminaire against background AutoCAD building and lighting layouts, and incorporates a hierarchy of access levels to prevent unauthorised access or modifications to the system configuration.



Remote
access &
monitoring



Remote monitoring enables lighting to be configured, monitored and controlled from a remote location, and system alerts to be transmitted to mobile devices.

Remote health-checks provide proactive management of the system ensuring lighting is operating at maximum efficiency.

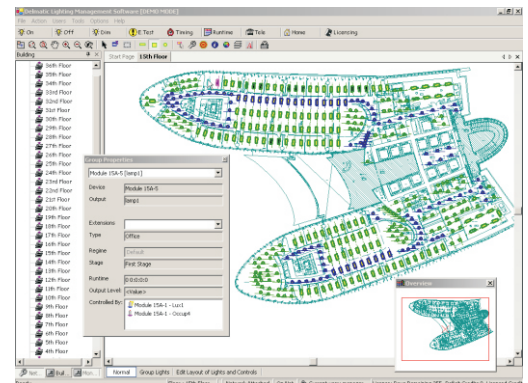
Lightscape features can include:

- active status of each luminaire
- dynamic feedback from system hardware
- real-time Dali lamp and ballast failure
- virtual wiring for software grouping of lighting
- drag-and-drop auto-binding configuration
- multi-level password protection and access rights
- emergency light testing and monitoring
- Dali emergency device testing and monitoring
- lamp hours-run logging
- generation of optimised luminaire relamping schedules
- adjustment of presence detector time-out period
- configuration of sensor as presence or absence detection
- adjustment of photocell sensitivity thresholds
- comprehensive calendar time scheduler
- multiple time regimes for tenanted areas
- special timing patterns for holiday periods
- astronomical solar clock functions
- biodynamic control routines
- loadshedding scenarios and scenes
- hardware monitoring & self-healing diagnostics
- integration with BMS and other head-end systems
- seamless operation with Lon/BACnet devices eg. blinds & HVAC
- ability to export data for further analysis
- multi-client access via building IT network
- context-sensitive alerts with e-mail & PDA options
- internet access for remote monitoring and control
- network tree (architecture & hardware inventory)
- automatic remote backup and data storage

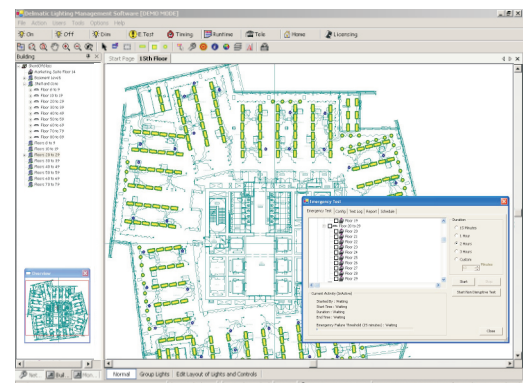


The complete lighting management system can be monitored, managed and configured from any network or mobile device.

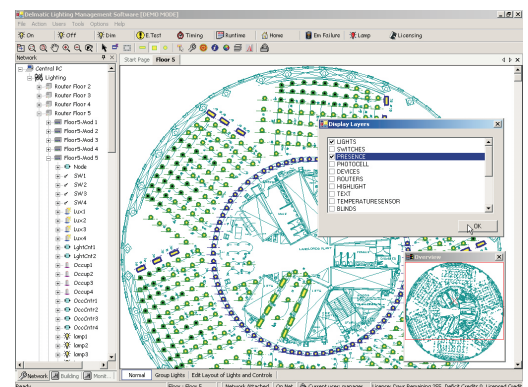
25



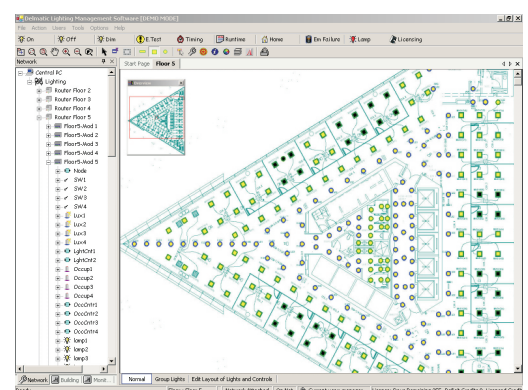
the software provides real-time monitoring of the lighting installation and the ability to reconfigure switching and dimming arrangements



lamp-run time monitoring and virtual metering enables energy usage to be analysed and apportioned across various building cost centres



the graphics enable various layers to be displayed - building, lights, sensors, switches, etc - while the system explorer tree shows the architecture and status of the lighting management hardware



the complete system operation is software configurable including the time-out periods of presence detectors and daylight-linking thresholds